



TSY220C BULLDOZER

AWARDED THE ISO9001:2000 SYSTEM CERTIFICATE

Engine Model: Cummins NT855-C280S10

Flywheel Horsepower: 220 HP (179 kW) / 2000 RPM

Operating Weight (Straight-Tilt dozer): 25700 kg



PT. BADA KIRIMA LESTARI

- Manufactured by adopting the technology of komatsu D85A -18 bulldozer, featuring high performance capacity, efficiency, safe and reliable in operation.
- Taking the advantage of lower ground pressure and suitable to be used in swamp and soft land application.
- Various options: air conditioner.

SPECIFICATION

Specification / Blade type	Straight-tilt
Operating Weight(kg)	25700
Min. Ground Clearance(mm)	405
Min. Turning Radius(m)	3.8
Ground Pressure(MPa)	0.039
Track Gauge(mm)	2250
Max. Pulling Force(KN)	221
Grade Ability(°)	30

TRAVEL SPEED

	1st	2nd	3rd
Forward(km/h)	0~3.6	0~6.5	0~11.2
Reverse(km/h)	0~4.3	0~7.7	0~13.2

ENGINE

Model & Type ... Cummins NT855-C280S10 6-cylinder, In-line, 4-stroke-cycle water-cooled, overhead valve direct injection, turbocharged diesel

Rated Revolution(rpm) 2000

Flywheel Horsepower(HP) 220

Cylinder Number-BoreX Stroke(mm) 6-139.7X152.4

Piston Displacement(L) 14

Min. Fuel Consumption(g/kwh) ≤212

Max. Torque(Nm/rpm) 1078/1250

Starting Method Starting motor 24V 11kW

POWER TRANSMISSION SYSTEM

Torque Converter 3-element, 1-stage, 1-phase

Transmission Planetary gear, multi-disc clutch, hydraulically connected, forced lubrication, 3 forward and 3 reverse speeds

Bevel Gear Spiral bevel gear, splash lubrication, single-stage speed reduction

Steering Clutch Wet, multi-disc, spring loaded, hydraulically separated, hydraulic control

Steering Brake Wet, floating, direct on-off hydraulic inter-linking operation

Final Drive Double reduction of spur gear, splash lubrication

HYDRAULIC SYSTEM

Pump Type Gear pump 07441-67503

Working Pressure(MPa) 14

System Discharge(L/min) 262(at revolution of 1800rpm)

Working Cylinder type Double-acting piston type

Working Cylinder lift Number-BoreX RodX Stroke(mm) 2-120X70X1043

Working Cylinder Tift BoreX RodX Stroke(mm) 200X90X130

UNDERCARRIAGE SYSTEM

Type Swing type of sprayed beam, suspended structure of equalizer bar

Carrier Rollers 2(each side)

Track Rollers 8/each side (5-single flange, 3-double flange)

Track Type Sealed, circular arc, triangular-grouser

Number Of Track Shoes 45(each side)

Width Of Track Shoes(mm) 945

Pitch(mm) 216

Length Of Track On Ground(mm) 3480

WORK EQUIPMENT

Specification/Blade type	Straight-tilt
Blade Capacity(m ³)	7.7
Blade Width X Height(mm)	4365X1330
Max. Lift(mm)	1330
Max. Depth(mm)	550
Max. Tilt Adjustment(mm)	≥735
Pitch Adjustment(°)	55
Capability (m ³ /h)(Theoretical value 40m)	330
Weight Of Blade(kg)	3820

COOLANT AND LUBRICANT CAPACITY

Fuel Tank Capacity(L) 480

Hydraulic Tank Capacity(L) 110

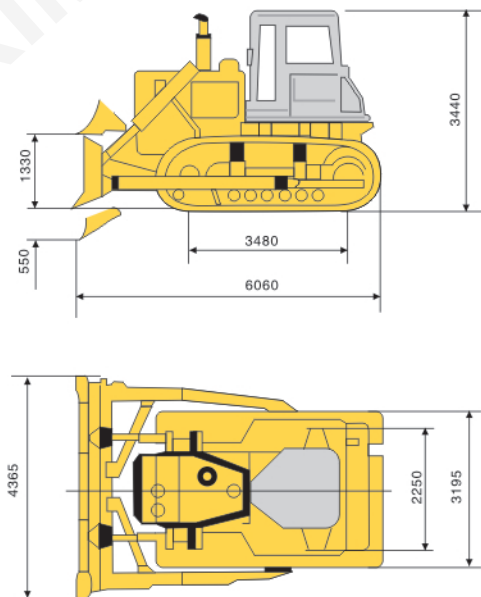
Engine Oil Capacity(L) 45

Torque Converter, Transmission, Bevel Gear, Steering Clutch Capacity(L) 122

Final Drive Capacity(L) 72(each side)

OVERALL DIMENSIONS

Straight-tilt Blade Dimensions



Note: Materials and specifications are subject to change without notice.



Authorized Distributor:
PT. BADAK PRIMA LESTARI

Kawasan Industri Millenium, Jl. Millenium 15 Blok I-2 No. 3A, Desa Peusar, Kecamatan Panongan,
Kabupaten Tangerang, Banten 15710 INDONESIA

Tel: +62 59986616 / 30, Fax.: +62 59986847

www.badakprima.co.id