



TS160G BULLDOZER

AWARDED THE ISO9001:2000 SYSTEM CERTIFICATE

Engine Model: Weichai WD 10G178E25

Flywheel Horsepower: 160 HP (131kW)/1850RPM

Operating Weight (Straight-Tilt dozer): 18800kg



PT. BADAQ PRIMA LESTARI

- Introduced Komatsu D60P-8 bulldozer technology, featuring high performance capacity, efficiency, safe and reliable in operation.
- Taking the advantage of lower ground pressure and suitable to be used in swamp and soft land application.
- Optional attachments: air conditioner, Sanitation blade

SPECIFICATION

Specification / Blade type	Straight-tilt	Sanitation-blade
Operating Weight(kg)	18800	19200
Min.Ground Clearance(mm)	510	510
Min.Turning Radius(m)	4.3	4.3
Ground Pressure(MPa)	0.027	0.028
Track Gauge(mm)	2170	2170
Max.Pulling Force(KN)	144	144
Grade Ability(°)	30	30

TRAVEL SPEED

	1st	2nd	3rd	4th	5th
Forward(km/h)	2.7	3.7	5.4	7.6	11
Reverse(km/h)	3.5	4.9	7.0	9.8	

ENGINE

Model&Type Weichai WD10G178E25,6-cylinder,in-line,vertical.
 Water-cooled,4-stroke-cycle,turbo-charged,over valve directs injection
 Rated Revolution(rpm) 1850
 Flywheel Horsepower(HP) 160
 Cylinder Number-BoreX Stroke(mm) 6-126X130
 Piston Displacement(L) 9.726
 Min.Fuel Consumption(g/kWh) ≤215
 Max.Torque(Nm/rpm) 830/1150
 Starting Method Starting motor 24V 5.5kW

TRANSMISSION SYSTEM

Main Clutch Wet,multiple-disc,with cut-off brake.
 Hand-manipulated and hydraulic boosted
 Transmission Bevel gear,constant meshed,forced lubrication,hand-
 manipulated,5 forward and 4 reverse speeds
 Bevel Gear Spiral bevel gear,splash lubrication,single-stage
 speed reduction
 Steering Clutch Wet,multi-disc,spring loaded,hydraulically separated,
 hydraulic control
 Steering Brake Wet,band type,pedal hydraulic booster,with parking brakes
 Final Drive Double reduction of spur gear,splash lubrication

HYDRAULIC SYSTEM

Pump Type Gear pump 07441-67503
 Working Pressure(MPa) 13.7
 System Discharge(L/min) 250(at revolution of 1850rpm)
 Working Cylinder type Double-acting piston type
 Working Cylinder lift Number-BoreXRodXStroke(mm) 2-110X65X1026
 Working Cylinder Tift BoreXRodXStroke(mm) 160X70X140

UNDERCARRIAGE SYSTEM

Type Swing type of sprayed beam,suspended structure of equalizer bar
 Carrier Rollers 2(each side)
 Track Rollers 7/each side (4-single flange, 3-double flange)
 Track Type Sealed,circular arc,triangular-grouser
 Number Of Track Shoes 44(each side)
 Width Of Track Shoes(mm) 1070
 Pitch(mm) 203.2
 Length Of Track On Ground(mm) 3140

WORK EQUIPMENT

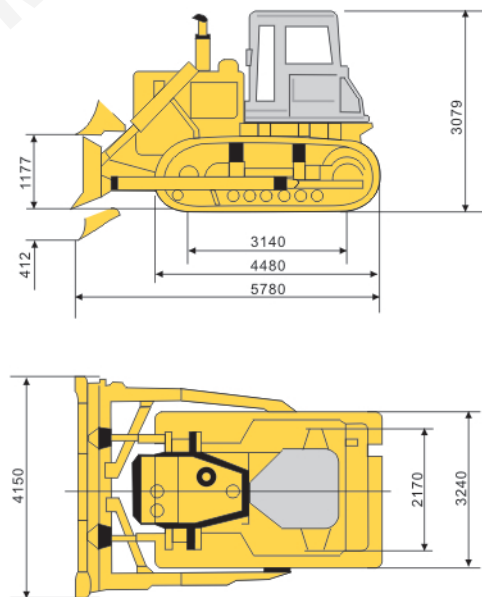
Specification/Blade type	Straight-tilt	Sanitation-blade
Blade Capacity(m ³)	3.9	11.8
Blade Width XHeight(mm)	4150X970	4210X1688
Max.Lift(mm)	1177	1177
Max.Depth(mm)	412	412
Max.Tilt Adjustment(mm)	≥789	≥789
Pitch Adjustment(°)	55	55
Capability (m ³ /h)(Theoretical value 40m)	255	255
Weight Of Blade(kg)	2218	2488

COOLANT AND LUBRICANT CAPACITY

Fuel Tank Capacity(L) 320
 Hydraulic Tank Capacity(L) 108
 Engine Oil Capacity(L) 20
 Torque Converter,Transmission,Bevel Gear,Steering Clutch Capacity(L)..... 80
 Final Drive Capacity(L) 31 (each side)

OVERALL DIMENSIONS

Straight-tilt Blade Dimensions



Note: Materials and specifications are subject to change without notice.



Authorized Distributor:
PT. BADAK PRIMA LESTARI

Kawasan Industri Millenium, Jl. Millenium 15 Blok I-2 No. 3A, Desa Peusar, Kecamatan Panongan,
 Kabupaten Tangerang, Banten 15710 INDONESIA

Tel: +62 59986616 / 30, Fax.: +62 59986847

www.badakprima.co.id