



T180F BULLDOZER

AWARDED THE ISO9001:2000 SYSTEM CERTIFICATE

Engine Model: Cummins NT855-C280S10/

Weichai WD10G200E25

Flywheel Horsepower: 180HP (148kW) / 1850RPM

Operating Weight (Straight-Tilt dozer): 17900kg



PT. BATAK PRIMA LESTARI

- Introducing Komatsu D60E--8 bulldozer technology, featuring high performance capacity, efficiency, safe and reliable in operation.
- Suitable to be used in any forestry logging applications.
- Canopy structure ensuring excellent visibility and safe operation for operators.
- Optional attachments: straight-tilt blade, angle blade, U-blade, winch, 3-shank ripper, 510mm track shoes, 610mm track shoes.

SPECIFICATION

Specification / Blade type	Straight-tilt	Angle	U-Blade
Operating Weight(kg)	17900	18200	18500
Min. Ground Clearance(mm)	400	400	400
Min. Turning Radius(m)	3.3	3.3	3.3
Ground Pressure(MPa)	0.065	0.066	0.066
Track Gauge(mm)	1880	1880	1880
Max. Pulling Force(KN)	147.2	147.2	147.2
Grade Ability(°)	30	30	30

TRAVEL SPEED

	1st	2nd	3rd	4th	5th
Forward(km/h)	2.6	3.5	4.7	7.0	10.3
Reverse(km/h)	3.3	4.5	6.1	9.1	

ENGINE

Model & Type Cummins NT855-C280S10/ Weichai
WD10G200E25, 6-cylinder, in-line, vertical water-cooled, 4-stroke-cycle
turbo-charged, over valve direct injection

Rated Revolution(rpm).....	1850
Flywheel Horsepower(HP).....	180
Cylinder Number-Bore X Stroke(mm).....	Cummins: 6-139.7X152.4 Weichai: 6-126X130
Piston Displacement(L).....	Cummins: 14 Weichai: 9.726
Min. Fuel Consumption(g/kWh).....	Cummins: ≤212 Weichai: ≤215
Max. Torque(Nm/rpm).....	Cummins: 877/1250 Weichai: 920/1150
Starting Method.....	Starting motor 24V5.5 kW

TRANSMISSION SYSTEM

Main Clutch.....	Wet, multiple-disc, with cut-off brake, hand-manipulated and hydraulic boosted
Transmission.....	Bevel gear, constant meshed, forced lubrication, hand- manipulated, 5 forward and 4 reverse speeds
Bevel Gear.....	Spiral bevel gear, splash lubrication, single-stage speed reduction
Steering Clutch.....	Wet, multi-disc, spring loaded, hydraulically separated, hydraulic control
Steering Brake.....	Wet, band type, pedal hydraulic booster, with parking brakes
Final Drive.....	Double reduction of spur gear, splash lubrication

HYDRAULIC SYSTEM

Pump Type.....	Gear pump 07441-67503
Working Pressure(MPa).....	13.7
System Discharge(L/min).....	250(at revolution of 1850rpm)
Working Cylinder type.....	Double-acting piston type
Working Cylinder lift Number-Bore X Rod X Stroke(mm).....	2-110X65X1026
Working Cylinder Tift Bore X Rod X Stroke(mm).....	160x70x140

UNDERCARRIAGE SYSTEM

Type.....	Swing type of sprayed beam, suspended structure of equalizer bar
Carrier Rollers.....	2(each side)
Track Rollers.....	7/each side (4-single flange, 3-double flange)
Track Type.....	Sealed, assembled single-grouser
Number Of Track Shoes.....	39(each side)
Width Of Track Shoes(mm).....	510
Pitch(mm).....	203.2
Length Of Track On Ground(mm).....	2635

WORK EQUIPMENT

Specification/Blade type	Straight-tilt	Angle	U-Blade
Blade Capacity(m ³)	4.5	4.3	8.6
Blade Width x Height(mm)	3416X1149	3970X1050	4164X1386
Max. Lift(mm)	1124	1250	1250
Max. Depth(mm)	584	545	545
Max. Tilt Adjustment(mm)	≥860	≥400	≥400
Pitch Adjustment(°)	55	55	55
Capability (m ³ /h) (Theoretical value 40m)	297.4	297.4	297.4
Weight Of Blade(kg)	2218	2015	2223

COOLANT AND LUBRICANT CAPACITY

Fuel Tank Capacity(L).....	320
Hydraulic Tank Capacity(L).....	108
Engine Oil Capacity(L).....	45
Torque Converter, Transmission, Bevel Gear, Steering Clutch Capacity(L).....	122
Final Drive Capacity(L).....	33(each side)

RIPPER(OPTIONAL)

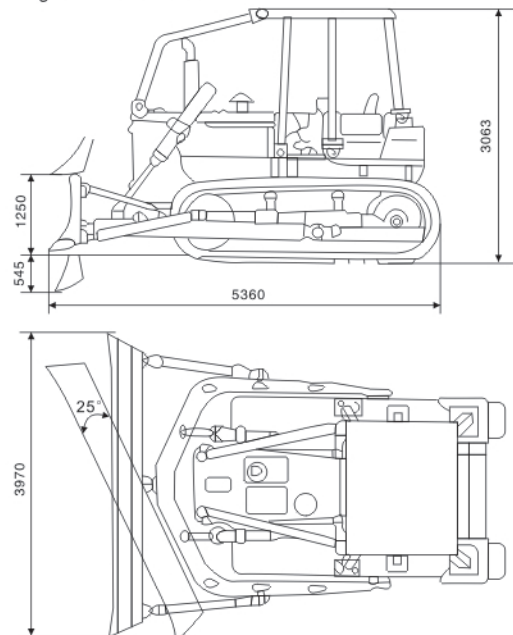
3-Shank Ripper:	
Max. Digging Depth(mm).....	572
Max. Lift(mm).....	702
Shank Of Distance(mm).....	950
Weight(kg).....	1700

WINCH(OPTIONAL)

Weight(Kg).....	1390
Cable Line Pull Of Bare Drum(KN).....	266.8
Cable Line Pull Of Full Drum (KN).....	157.7
Cable Line Speed Of Bare Drum(m/s).....	0.50
Cable Line Speed Of Full Drum(m/s).....	0.83
Cable Dia. X Length(mm).....	φ26X6600

OVERALL DIMENSIONS

Angle Blade Dimensions



Note: Materials and specifications are subject to change without notice.

Authorized Distributor:

PT. BADAK PRIMA LESTARI

Kawasan Industri Millenium, Jl. Millenium 15 Blok I-2 No. 3A, Desa Peusar, Kecamatan Panongan,
Kabupaten Tangerang, Banten 15710 INDONESIA

Tel: +62 59986616 / 30, Fax.: +62 59986847

www.badakprima.co.id