

SE210W

SHANTUI
VALUE THAT WORKS

EXCAVATOR
SERIES

Engine Model	Weichai WP7
Gross Power	116 kW/2000 rpm
Operating Weight	21100 kg

LET'S MAKE
CONSTRUCTION EASIER



PT. BADAK PRIMA LESTARI

Kawasan Industri Millenium, Jl. Millenium 15 Blok I-2 No. 3A,
Desa Peusar, Kec Panongan, Kab Tangerang, Banten 15710 INDONESIA

Tel: +62 59986616 / 30 , Fax.: +62 59986847

www.badakprima.co.id

SE210W TECHNICAL PARAMETERS EXCAVATOR SERIES

SHANTUI
VALUE THAT WORKS

ENGINE

Model	Weichai WP7
Type	High pressure common rail, turbocharged
No. of cylinder	6
Emission Regulation	Tier 3 / Stage III
Displacement	7.47L
Power output	116kW/2000rpm

HYDRAULIC SYSTEM

Type	Axial variable plunger pump
Max. discharge flow	2x218L/min

DIGGING FORCE (ISO6015)

Bucket digging force	115/135kN
Arm digging force	92.5/99kN

BUCKET

Type	Backhoe bucket
Bucket capacity	0.45~1.05(0.9) m ³
Bucket width	1267mm

TRAVEL SYSTEM

Type	Axial variable plunger motor
Support roller quantities	2x7
Carrier roller quantities	2x2
Travel shoes	2x46
Travel speed	3.3/5.4km/h
Drawbar pulling force	201kN
Grade ability	70% (35°)

SWING SYSTEM

Swing motor type	Swash plate plunger motor
Swing speed	0-11.5r/min
Brake type	Pressure release mechanical braking

REFILLING CAPACITIES & LUBRICATIONS

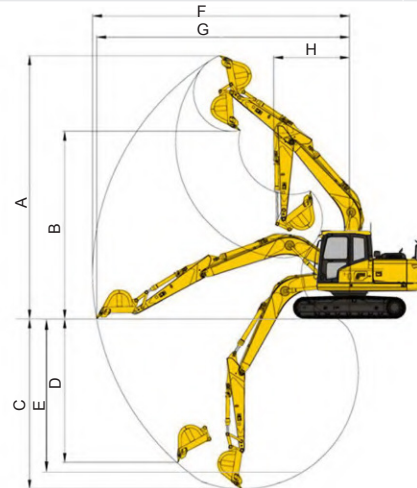
Fuel tank	340L
Cooling system	25L
Engine oil	24L
Hydraulic oil tank	250L
System Capacity	420L

OPERATING WEIGHT AND GROUND PRESSURE

Shoe width	500mm
Ground pressure	47.3kPa
Operating weight	21100kg

SCOPE OF WORK (mm) (Boom: 5700 mm Arm: 2925 mm)

A	Max. digging height	10029
B	Max. dumping height	7132
C	Max. digging depth	6541
D	Max. vertical digging depth	5985
E	Max. Depth cut for 2500mm Level Bottom	6404
F	Max. digging distance	9860
G	Max. digging radius at ground level	9673
H	Min. swing radius of work equipment	3041



DIMENSIONS (mm)

A	Overall length	9543
B	Ground contact length (Transportation)	4860
C	Overall height(to top of boom)	3039
D	Overall width	2800
E	Overall height(to top of cab)	2977
F	Counter weight ground clearance	1120
G	Ground clearance	470
H	Tail swing radius	2905
I	Crawler wheel base	3360
J	Track length	4160
K	Track gauge	2200
L	Track width	2800
M	Shoe width	600
O	Bonnet height	2392
P	Revolving frame width	2726
Q	Distance from swivel center to tail	2853

